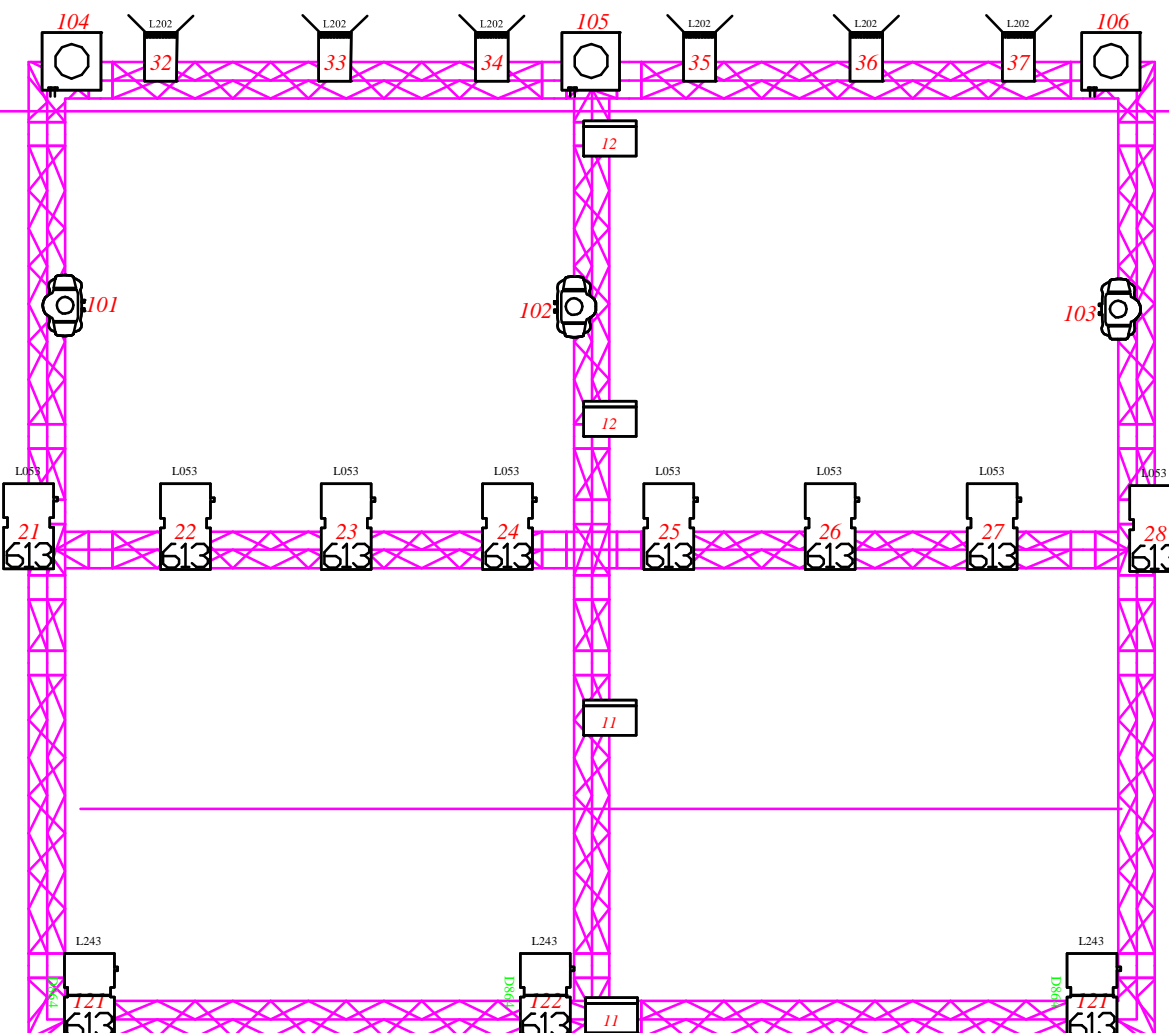
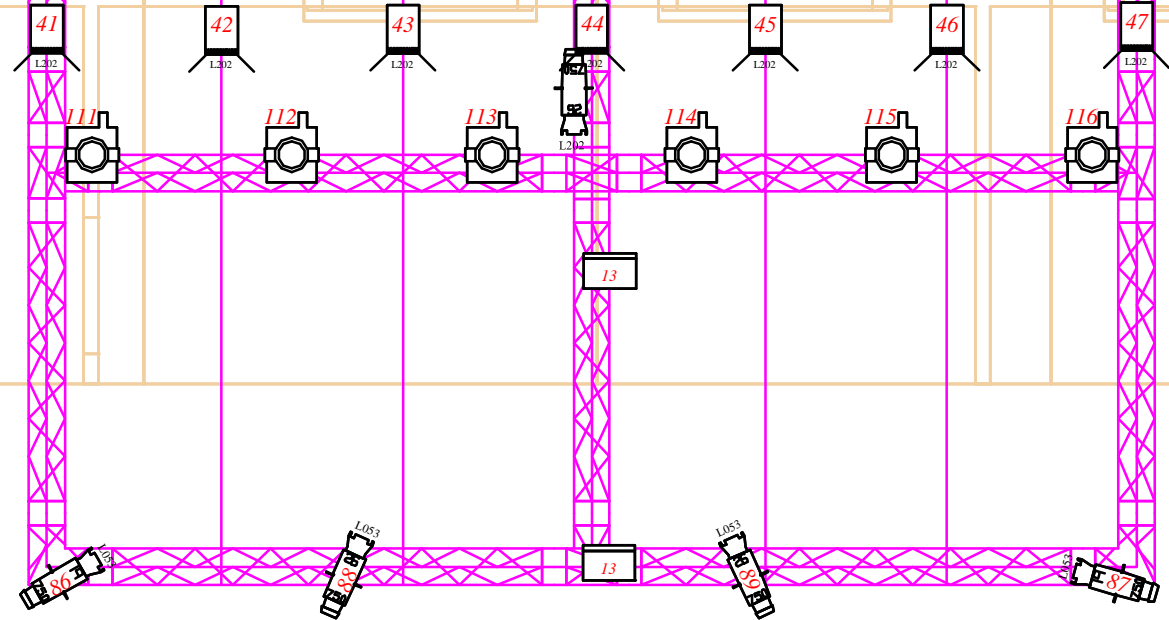
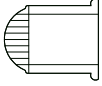


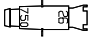
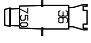


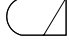








225 225 226 226 227 227 228 228 229 229 230 230 231 231 232 232 233 233 234 234 235 235
213 213 214 214 215 215 216 216 217 217 218 218 219 219 220 220 221 221 222 222 223 223 224 224
201 201 202 202 203 203 204 204 205 205 206 206 207 207 208 208 209 209 210 210 211 211 212 212



1 2 3 4 3 5 6

KEY

Symbol	Name	Count
	ARRI 5kW fresnel	2
	Sel 1200 Fresnel	17
	Source 4 750 19	8
	Source 4 750 26	7
	Source 4 750 36	10
	Source 4jr 25/50	14
	RJ 613	19
	PAR64 CP61	55
	PAR64 CP62	21
	ADB ACP 1001 Plan	8
	Byggflood 500W	16
	Mac 250 wash	6
	Mac 300 wash	4
	MAC 350 Entour Plan	3

Unge Werthers Lidanden

STOCKHOLM STADSTEATER SKÄRHOLMEN

2013-03-08

printed: 2013-03-13, scale 1:50 on A3 paper

Director: Carolina Frände

Set Design: Daniel Åkerström-Steen

Light Design: Karl Svensson

tel: +46 705 617 714, url: www.skimra.com