

The Laramie Project

STOCKHOLM STADSTEATER SKÄRHOLMEN

2018-03-09

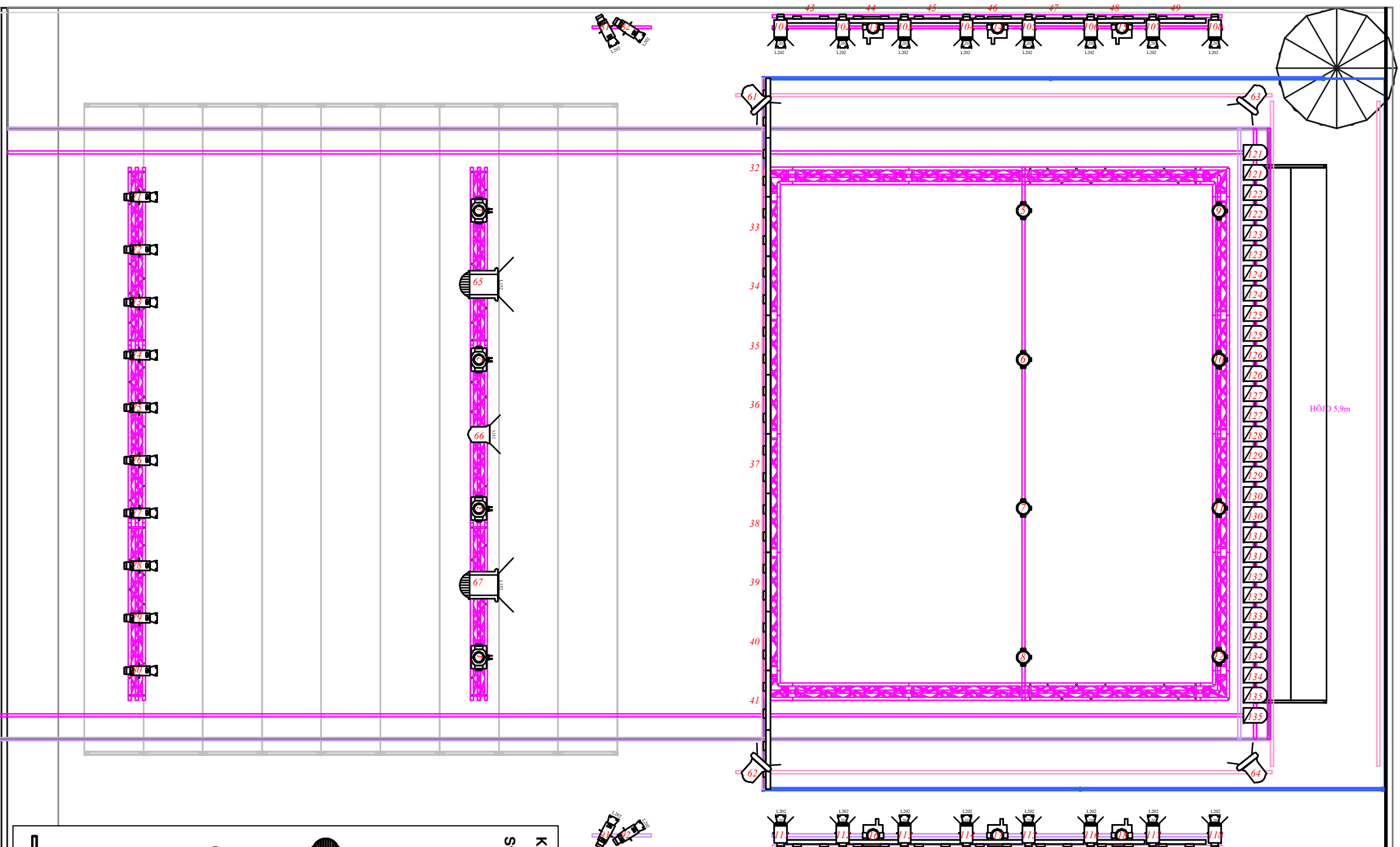
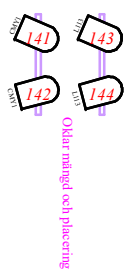
Utskriven: 2017-12-19, skala 1:75 på A3 papper

regi: Carolina Frände

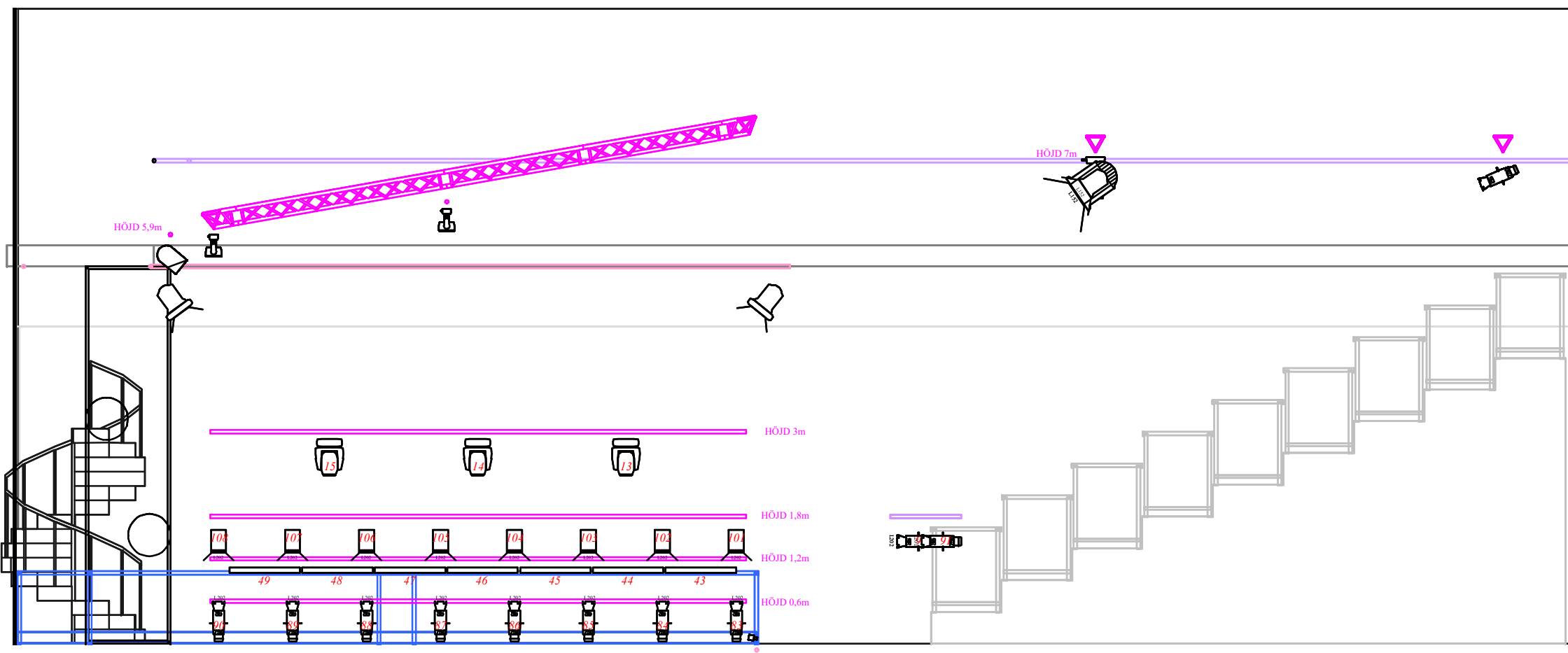
scenografi: Charlotta Nylund

ljus: Karl Svensson

tel: +46 705 617 714. url: www.skimra.com



Symbol	Namn	Antal
	ETC Source 4 750 26degree	10
	PAR 64 CP62	4
	ETC Source 4 750 36degree	20
	Selecon 1200 HP fresnel	16
	ARRI 5000W Studio Fresnel	2
	Strand Lighting Bambino 5KW	1
	Strand Lighting Bambino 5KW scroller	4
	PAR 64 CP61	29
	MAC Aura XB	8
	Mac 250 Wash	6
	Robin 300E Wash	4
	Pixel Bar 12	26



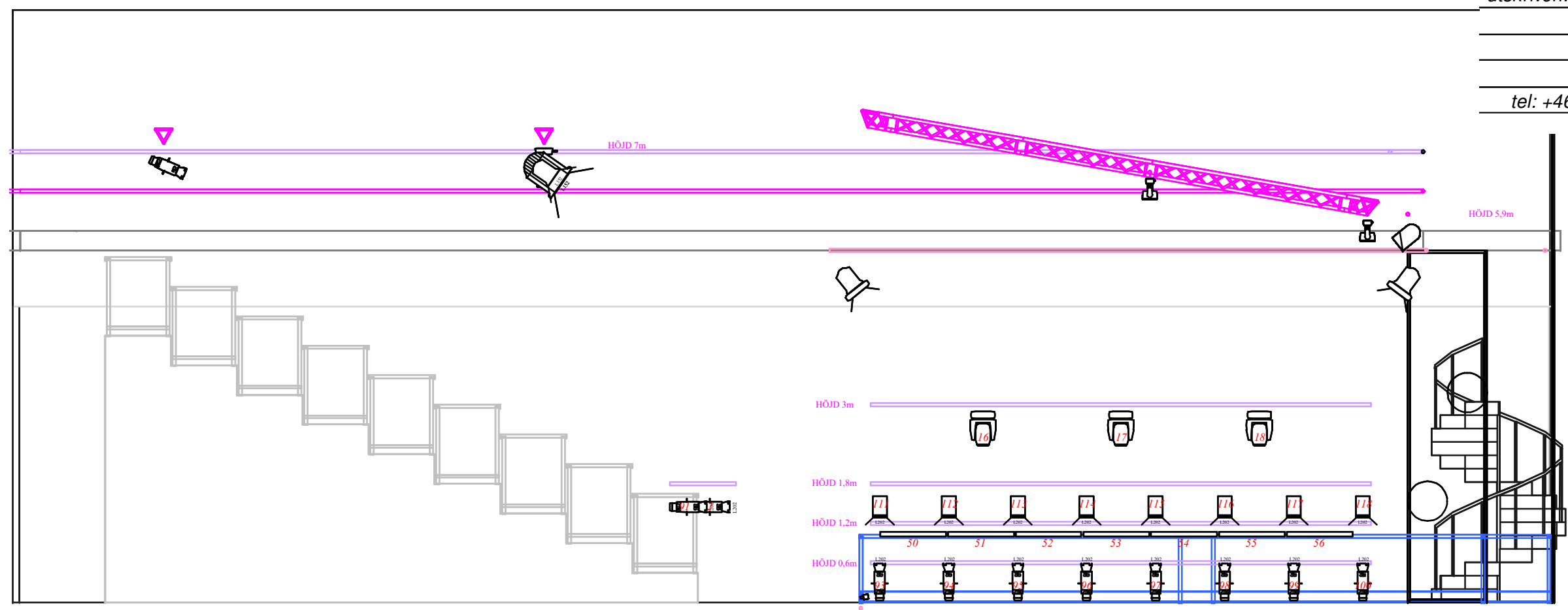
KEY		
Symbol	Namn	Antal
	ETC Source 4 750 26degree	10
	PAR 64 CP62	4
	ETC Source 4 750 36degree	20
	Selecon 1200 HP fresnel	16
	ARRI 5000W Studio Fresnel	2
	Strand Lighting Bambino 5kW	1
	Strand Lighting Bambino 5kW scroller	4
	PAR 64 CP61	29
	MAC Aura XB	8
	Mac 250 Wash	6
	Robin 300E Wash	4
	Pixel Bar 12	26

The Laramie Project

STOCKHOLM STADSTEATER SKÄRHOLMEN
2018-03-09

utskrivet: 2017-12-19, skala 1:75 på A3 papper

regi:	Carolina Frände
scenografi:	Charlotta Nylund
ljus:	Karl Svensson
tel:	+46 705 617 714, url: www.skimra.com



The Laramie Project

STOCKHOLM STADSTEATER SKÄRHOLMEN

2018-03-09

utskrivnen: 2017-12-19, skala 1:75 på A3 papper

regi: Carolina Frände

scenografi: Charlotta Nylund

ljus: Karl Svensson

tel: +46 705 617 714, url: www.skimra.com

